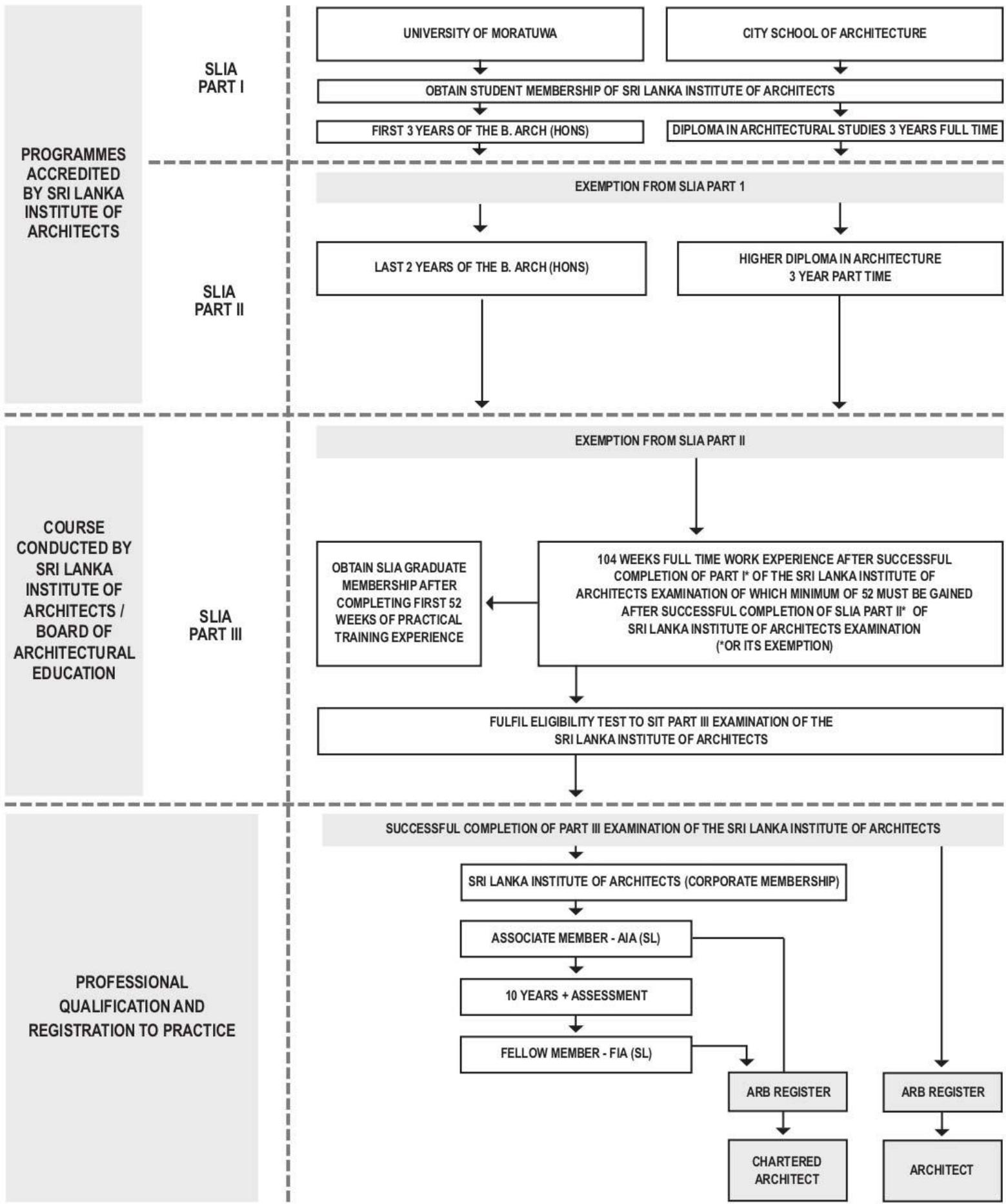
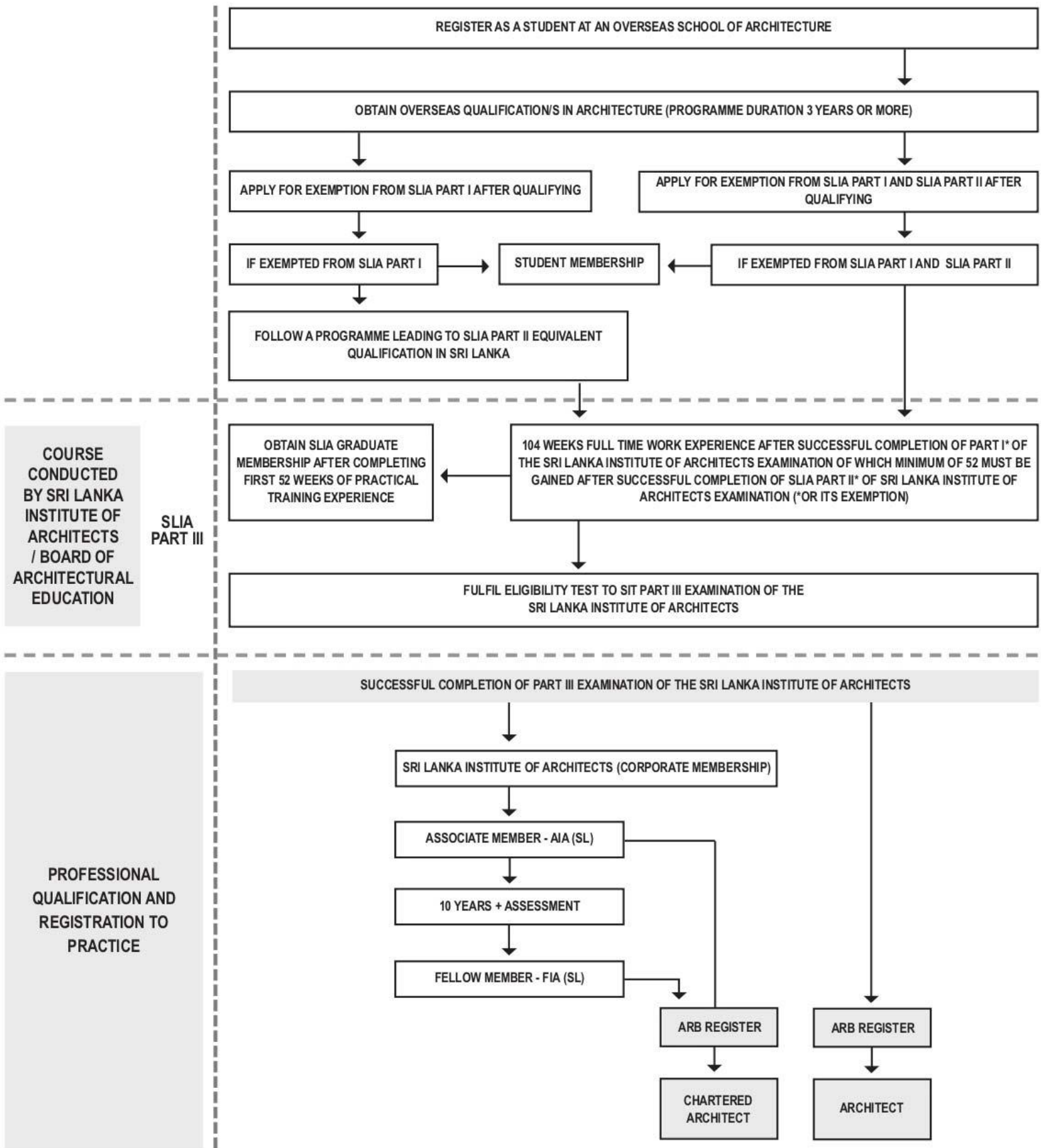


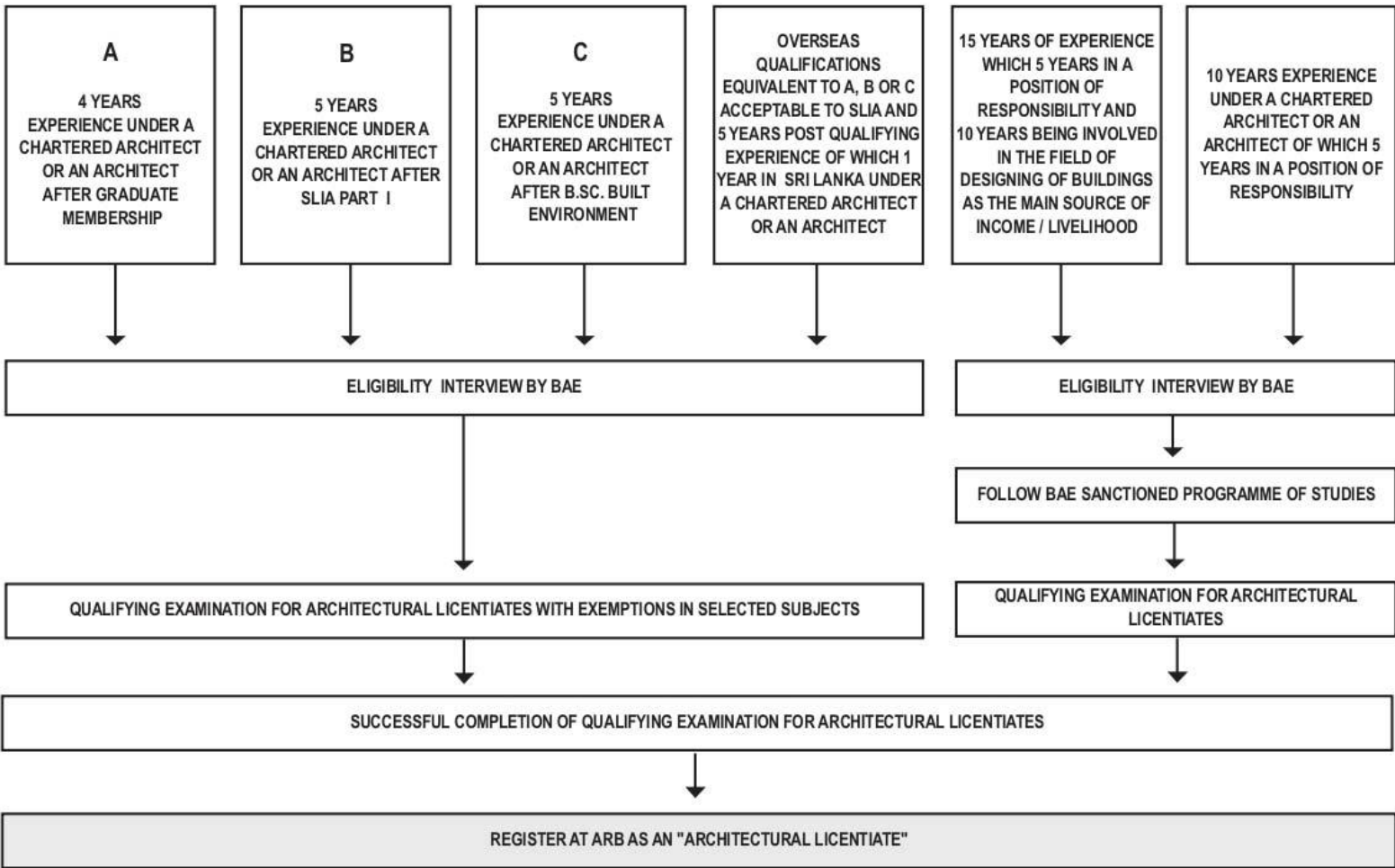
PATH TO REGISTER AS A CHARTERED ARCHITECT / ARCHITECT LOCAL QUALIFICATIONS (ACCREDITED COURSES)



PATH TO REGISTER AS A CHARTERED ARCHITECT / ARCHITECT FOREIGN QUALIFICATIONS (EXEMPTION FOR SLIA PART I & PART II)



PATH TO REGISTER AS AN ARCHITECTURAL LICENTIATE



ELIGIBILITY CRITERIA

ANNUALLY OR AS APPROPRIATE

